



St Peter's
Cambridge

NEW ZEALAND

INFORMATION FOR PARENTS OF INTERNATIONAL STUDENTS 2021



CONTENTS

| | |
|--|----|
| SCHOOL TELEPHONE NUMBERS | 4 |
| PASTORAL CARE FRAMEWORK | 4 |
| WELCOME TO ST PETER'S, CAMBRIDGE | 5 |
| BOARDING HOUSES | 5 |
| CHAPEL | 5 |
| CHOOSING A LAPTOP | 5 |
| CO-CURRICULAR PARTICIPATION | 6 |
| DAILY TIMETABLE | 7 |
| HOMEWORK / PREP | 7 |
| ID CARDS | 7 |
| LEADERSHIP | 8 |
| LEAVE | 8 |
| MEDICAL INFORMATION | 8 |
| MUSICAL THEATRE ACADEMY | 9 |
| MY ST PETER'S COMMUNITY PORTAL (FOR PARENTS) | 9 |
| CONSENT TO GO | 9 |
| REPORTING | 10 |
| SCHOOL EXPECTATIONS | 10 |
| SPORTS' DEVELOPMENT / ACADEMIES | 10 |
| STATIONERY | 11 |
| ST PETER'S ALUMNI ASSOCIATION | 11 |
| ST PETER'S LEAVE WEEKENDS / MID TERM BREAKS | 11 |
| STUDENT CENTRE | 11 |
| UNIFORM | 11 |
| UNIFORM GIRLS' YEARS 7-12 | 12 |
| UNIFORM BOYS' YEARS 7-12 | 13 |
| UNIFORM YEAR 13 | 14 |
| WELLBEING | 15 |
| YEAR 7 AND 8 | 16 |

SCHOOL TELEPHONE NUMBERS

Office hours 8.00am-4.00pm term time only. Our reception staff can connect you with anyone at school.

Our reception staff can connect you with anyone at school

| | |
|---|-----------------------|
| Executive Principal - Dale Burden | (07)827 9828 |
| Campus Principal - Julie Small | (07) 827 9840 |
| Chief Operating Officer - Rob Campbell | (07) 827 9859 |
| Deputy Principal - Brenton Joubert | (07) 823 3687 |
| Deputy Principal - Gerard Keightley | (07) 827 9877 |
| Deputy Principal - Jess Patrick | (07) 827 9899 ext 428 |
| Deputy Principal - Yvette Williams | (07) 827 9899 ext 610 |
| Deputy Principal - Head of Year 7 & 8 - Kurt O'Connell | (07) 827 9806 |
| Director of Boarding - Jed Rowlands | (07) 827 9810 |
| School Chaplain - Rev Michael Bennett | (07) 827 9804 |

PASTORAL CARE FRAMEWORK

House Deans

Please call **(07) 827 9899** followed by the extension numbers listed below:

| | | | |
|-----------------|--|---------|--|
| Thornton | Year 13 Lead Dean - Marty Seifert | Ext 625 | martys@stpeters.school.nz |
| | Year 11 and Year 12 Senior Dean - Chris Macleod | Ext 626 | christinem@stpeters.school.nz |
| | Year 9 and Year 10 Junior Dean - Alex Green | Ext 615 | alexg@stpeters.school.nz |
| Hanna | Year 13 Lead Dean - Leanne Walker | Ext 823 | leannew@stpeters.school.nz |
| | Year 11 and Year 12 Senior Dean - Hanna Reid | Ext 623 | hanna.reid@stpeters.school.nz |
| | Year 9 and Year 10 Junior Dean - Oliver Fox | Ext 607 | oliverf@stpeters.school.nz |
| Chandler | Year 13 Lead Dean - Mark Bellham | Ext 451 | mark.bellham@stpeters.school.nz |
| | Year 11 and Year 12 Senior Dean - David Vesseur | Ext 604 | davidv@stpeters.school.nz |
| | Year 9 and Year 10 Junior Dean - Helen Arjomandi | Ext 617 | helena@stpeters.school.nz |
| Swears | Year 13 Lead Dean - Jenny O'Leary | Ext 420 | jennyl@stpeters.school.nz |
| | Year 11 and 12 Senior Dean - Jodie Blackwell | Ext 627 | jodieb@stpeters.school.nz |
| | Year 9 and Year 10 Junior Dean - Natasha Frethey | Ext 629 | natasha.frethey@stpeters.school.nz |
| | Year 7 Dean - Mario Saez | Ext 406 | mario.saez@stpeters.school.nz |
| | Year 8 Dean - Owen Stevenson | Ext 613 | owens@stpeters.school.nz |
| | International Dean - Lauree Fuller | Ext 803 | lauree.fuller@stpeters.school.nz |

WELCOME TO ST PETER'S, CAMBRIDGE

This handbook will provide international parents with an understanding of the expectations and routines of the school. St Peter's aims to create an environment which enables students to become well-rounded individuals, who understand the Christian faith, have a positive attitude in the classroom and an appreciation for cultural, sporting and academic endeavours.

This is expressed in the School's philosophical vision statement, Mind, Body and Spirit.

Students at St Peter's are expected to:

- bring a positive attitude towards learning;
- be committed to completing the classwork and homework set to ensure the development of positive work habits;
- become involved in school life and take pride in all school activities;
- develop sound morals and a sense of responsibility towards others, through service and student leadership learning;
- have respect for self, members of the community and the environment.

Other relevant information:

- the school website is a source of information for all members of the St Peter's community: www.stpeters.school.nz;
- the [MY ST PETER'S COMMUNITY PORTAL](#) is a secure site which provides you with access to information specific to your own child, such as teacher contact details and assessment feedback;
- the Term Calendar is live on the [MY ST PETER'S COMMUNITY PORTAL](#) and is updated regularly;
- the "This Week, Next Week" is a detailed day-by-day breakdown documentation of events, meetings etc. This is the most up to-date publication and is available on the [MY ST PETER'S COMMUNITY PORTAL](#);
- the school newsletter, *InTouch* offers up-to-date information about our activities and events;
- the Events section of the website.

BOARDING HOUSES

St Peter's is the largest co-educational school boarding campus in New Zealand. The school's eight boarding houses provide for up to 470 boarders. We work consistently to provide a world class boarding experience for our international students.

There are four girls' boarding houses: School House, Lippincott House, Wrigley House and Beaufort House.

The boys' boarding houses are Morris House, Riddet House, Oliphant House and Broadhurst House.

Our students do not remain in one house during their whole time at school. Instead each student is matched in their respective year levels within a boarding house, each house catering for 2 or 3 year levels.

A House Director manages each boarding house with a Matron and at least two-House Assistants. The House Director is normally a member of our teaching staff. If your child is a boarder, you will be provided with further information regarding the House Director and Matron's contact details, routines and expectations of your child's boarding house.

For more information about boarding please visit: <https://internationalstudents.stpeters.school.nz/accommodation/>

CHAPEL

St Peter's was founded on Anglican principles and the Chapel is at the heart of our school. There is no test of faith to enter St Peter's, however, all students attend chapel services and show respect for the founding principles of the school. Chapel services are held weekly during the school day and, in addition, boarders attend regular Sunday evening services each term.

CHOOSING A LAPTOP

Although selecting a laptop is a personal choice for the individual student and family, the school recommends either Apple MacBooks or laptops running Microsoft Windows only. Whilst Chromebooks and Laptops running operating systems like Android, Ubuntu etc. can connect to the school network, they are very restrictive and will give the student problems in some classes.

There are many different types of laptops on the market, below are some options to consider with choosing a laptop

1. Windows-based (non-touchscreen). A good option is HP brand;
2. Windows-based touch screen and pen. Windows 2 in 1 tablet HP Elite;
3. Apple (non-touchscreen). Apple 13" Macbook Pro.

A new laptop is recommended to have the following minimum spec:

- 11" screen;
- 8 GB RAM (Memory);
- 250 GB hard drive (with solid-state being faster and more resilient to knocks);
- Wireless capable;
- Suitable protective case or bag;
- Our network does allow connection for phones and tablets, but these should only be companion devices to the student's laptop, for schoolwork, and used when the teacher deems it appropriate.

ICT Help Support is available in the Library for all students.

CO-CURRICULAR PARTICIPATION

Every student is expected to take part in the school's extensive co-curricular programme. We are proud of the successes that have been achieved over the long history of the school.

Last year many students represented the school in a wide range of Sport and Performing Art / Cultural activities. We encourage students to make the most of the opportunities offered in our variety of co-curricular programmes e.g. Productions, Rowing, Dance troupes, Basketball, Music ensembles, Football, Drama clubs, Netball, Debating, Lacrosse, Kapa Haka, Hockey and many more.

There are two sports musters each year, summer and winter. Students put their names forward to play a particular sport and they are then assigned to the appropriate teams, according to their age and ability level. The Winter Sports Muster is held on Monday 8 March 2021.

Enquiries regarding sports made be made to the Director of Sport, Te Aroha Keenan, email tearoha.keenan@stpeters.school.nz

Performing Arts and Cultural groups usually run for the whole year. Sign-ups take place at the start of Term 1. Groups begin from week 3 of Term 1. If the group has an auditioned entry, these generally take place in week 2 of Term 1. Students and parents sign-up through the school portal or at the office in the Thornton Auditorium.

Enquiries regarding Performing Arts and Cultural activities may be made to the Director of Performing Arts, Stephen Morton-Jones, (07) 827 9899 ext 608, email Stephenmj@stpeters.school.nz

Please note that by signing-up to Performing Arts, Cultural and Sports groups, you are making a commitment for the whole year.

DAILY TIMETABLE

The school timetable operates on a seven day rotation, 6 periods per day.

| | Monday | Tuesday | Wednesday | Thursday | Friday | Saturday | Sunday |
|-------------|--|---|--|---|--|-----------------------------|--|
| P1 | 8.15–9.00am | 8.15–9.00am | 8.15–9.00am | 8.15–9.00am | Staff Professional Learning | Extra-Curricular Activities | Boarders' Chapel Service 7.00pm and 7.30pm or Combined Service 7.00pm (as published) |
| P2 | 9.05–9.50am | 9.05–9.50am | 9.05–9.50am | 9.05–9.50am | 9.05–9.50am | | |
| Break | 9.50–10.20am Staff Briefing | 9.50–10.20am | 9.50–10.20am | 9.50–10.20am Staff Briefing | 9.50–10.20am | | |
| P3 | 10.25–11.15am | 10.25–11.15am | 10.25–11.15am | 10.25–11.15am | 10.25–11.15am | | |
| P4 | 11.20–12.10pm | 11.20–12.10pm | 11.20–12.10pm | 11.20–12.10pm | 11.20–12.10pm | | |
| Junior (Jr) | Jr Lunch/ Flexitime 12.10–12.55pm Jr Assembly 12.55pm–1.30pm | ALL Learning Group 12.15–12.35pm Lunch/Flexitime 12.35–1.30pm | Jr Lunch/ Flexitime 12.10–12.55pm Jr Chapel 12.55–1.30pm | ALL Learning Group 12.15–12.35pm Lunch/Flexitime 12.35–1.30pm | Whole School Lunch 12.10–1.30pm and Whole School Cultural Activities 12.10–1.30pm | | |
| Senior (Sr) | Sr Assembly 12.10–12.35pm Sr Lunch/ Flexitime 12.35–1.30pm | | Sr Chapel 12.10–12.45pm Sr Lunch Flexitime 12.40–1.30pm | | | | |
| P5 | 1.35–2.25pm | 1.35–2.25pm | 1.35–2.25pm | 1.35–2.25pm | 1.35–2.25pm | | |
| P6 | 2.30–3.20pm | 2.30–3.20pm | 2.30–3.20pm | 2.30–3.20pm | 2.30–3.20pm | | |
| | After school activities as advised 3.25pm Day buses depart 5.00pm | | | | Day buses depart 3.35pm Town leave for boarders 3.45–5.15pm (except prior to a Leave Weekend) | | |

| | Mon | Tue | Wed | Thu | Fri |
|---------------|-------|-------|-------|-------|-------|
| Week 1 | Day 1 | Day 2 | Day 3 | Day 4 | Day 5 |
| Week 2 | Day 6 | Day 7 | Day 1 | Day 2 | Day 3 |

The 'Day' timetable continues from one term to the next, i.e. if school finishes on Day 3, the next term will begin on Day 4.

HOMework / PREP

Homework is an important part of a student's performance at school. Completing homework (Prep) regularly will help consolidate achievement and positive learning habits.

At years 7 and 8, students will be given between 30 minutes to 1 hour of homework per night. It is also the expectation that students read each night and record the title of the book and the number of pages read in their Home Learning and Preparation Journal.

Students also need to record the homework set and time it took to complete in their journal, to ensure that a realistic amount of homework is being set and completed.

In Years 9 and 10, the expectation is that students may receive up to 15-20 minutes of homework, per subject, each night (6 periods per day). If students were for some reason, not set homework by a particular subject teacher, we would always encourage them to ensure the following happens:

- All work is fully completed for all subjects;
- Review and revision is carried out;
- Extra reading is undertaken.

Years 11, 12 and 13 may expect approximately 20-30 minutes per subject per night (6 periods per day).

ID CARDS

ID photos will be taken in February and Student ID Cards will be available 2-3 weeks later. If an International student comes later in the year, then ID photos are taken at that time.

LEADERSHIP

We believe every student has the potential to lead and the school provides evolving leadership opportunities at all year levels.

The Prefects are Year 13 students, who attend weekly lunchtime leadership training sessions led by Mr Joubert throughout the year. Compulsory evening training sessions led by Ms Small are also held and these are noted on the Term Calendar. The evening sessions are also available to interested Year 13 students who should contact Ms Small to learn more.

Student House Committees meet regularly with their Deans to plan events, raise school issues and support school spirit.

Each student has the opportunity to learn leadership through the various 'blocked' training sessions, at each year level.

We also have the opportunity for International Students to apply to become International Student Support Leaders.

LEAVE

Day Leave

Students are required to stay within the school boundaries between 8:15am and 3:20pm, on Monday, Tuesday, Wednesday, Thursday and on Friday, between 9:10am and 3:20pm. If any student needs to leave school during the day, a note explaining why they need to leave needs to be signed by the parent/caregiver and should be given to the International Dean or the Year level Dean of the student. Then permission can be given to the student.

For boarders please also copy your Boarding House Director into the leave request.

Please use the St Peter's App, or the leave request form available on the [MY ST PETER'S COMMUNITY PORTAL](#).

PLEASE REMEMBER: Attendance at school is important for student success. We expect our international students to be attending class every day so that they can meet their full potential.

MEDICAL CONDITIONS AND MEDICATIONS

St Peter's has policies and procedures in place to support our students and staff in managing medical conditions and the safe use of medications.

St Peter's understands that it has a responsibility to make the school welcoming and supportive to students with medical conditions and aims to provide the same opportunities as others at school.

All international students must follow these guidelines:

- International students are not to bring medication from overseas. If any is brought to school and it is not essential, then it will be disposed of.
- For any regular medication that is essential for a student's wellbeing, only two weeks supply is allowed to be bought. A Doctor's visit will be arranged for the student to be prescribed New Zealand medication to replace a student's overseas medication.
- Only medication that is prescribed in New Zealand is allowed to be used by international students.

For any other questions please email:

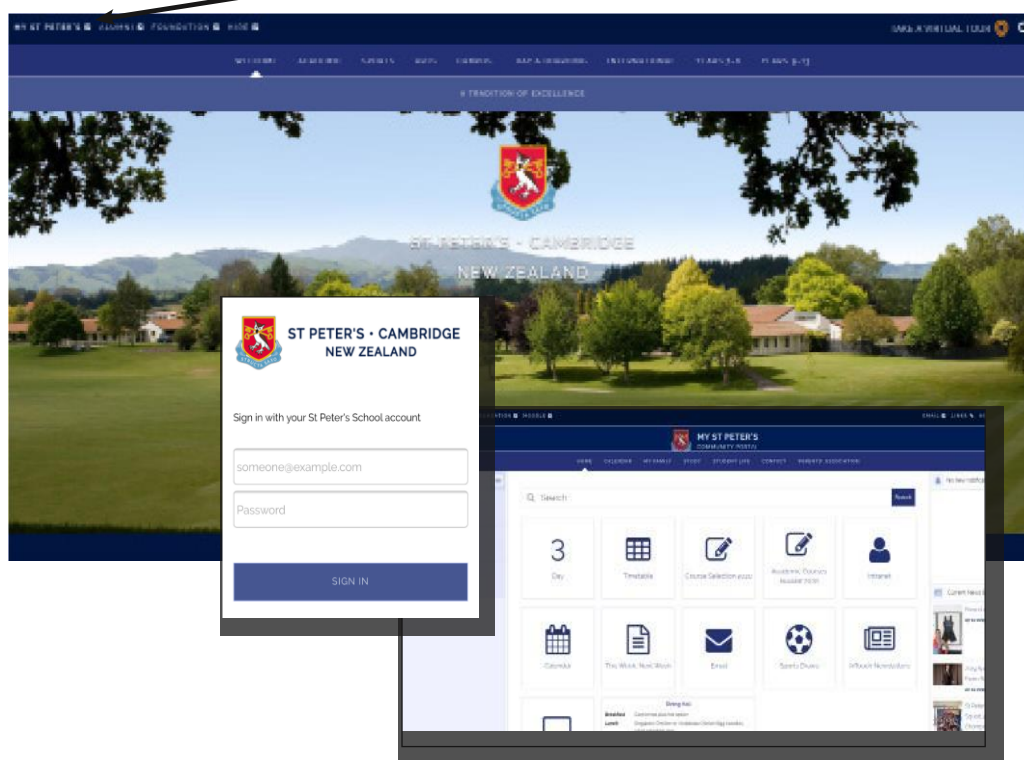
Dr Micheal Brown, Director of Wellbeing micheal.brown@stpeters.school.nz

The school's online consenting system, "Consent2Go", allows parents to update medical records and medication details or you can contact the international office at International@stpeters.school.nz

MUSICAL THEATRE ACADEMY

In addition to the many Performing Arts and Cultural groups, St Peter's offers the opportunity for students to become part of our Musical Theatre Academy. The Musical Theatre Academy offers Year 10-13 students the opportunity to experience specialised tuition in Voice, Dance and Acting by leading industry professionals. Students explore key Musical Theatre periods and elements, culminating in performance opportunities including performance cafe's and a Showcase Production that presents highlight of theyear's learning. It is a key pathway initiative alongside our annual Production (Year 9-13) and Your Production (Year 7-9).

MY ST PETER'S COMMUNITY PORTAL (FOR PARENTS)



You can use the [MY ST PETER'S COMMUNITY](#) to:

- view your child's timetable;
- view school reports;
- manage your child's performing arts scheduled lessons;
- contact your child's Dean, teachers and coaches;
- view your account statements (provided you are the fee payer);
- access information such as 'This Week Next Week, Sports Draws and Parents' Association details.

The parents' login can be accessed via the "[MY ST PETER'S](#)" section of the website.

For **new families** to gain access to the [MY ST PETER'S COMMUNITY PORTAL](#), use the login, which will be emailed to you. If you do not receive a login, please email enrolment@stpeters.school.nz to request your personalised details.

Returning families use their existing login details.

CONSENT TO GO – FOR EDUCATION OUTSIDE THE CLASSROOM

St Peter's *Consent2Go* is an online platform for getting parent permission, capturing and confirming health information about your child, managing ongoing medical updates, and managing all consent for school incursions and excursions. *Consent2Go* improves our ability to manage school trips, events and allows us to communicate with you promptly.

REPORTING

Student learning, progress and achievement will be reported on across the year in various ways:

- student and parent conferences;
- written reports.

All international student parents will have access to their child's school reports through the St Peter's School parent's portal.

For help, please email : international@stpeters.school.nz

SCHOOL EXPECTATIONS

It is important that students have a clear understanding of their responsibilities and behaviours that are acceptable at school.

At St Peter's we reward students for meeting school expectations and acting responsibly across all spheres of their education.

For students who are not able to meet expectations, we will work with the student to support them to learn what the appropriate behaviour is. There are consequences applied, should students continue to not meet expectations.

At St Peter's we expect all students to:

- Be polite and respectful;
- Be kind and helpful;
- Wear their uniform correctly and with pride;
- Use mobile phones / portable devices appropriately*
- Maintain a tidy school environment
- Attend each class every day on time.

* *Mobile phones/earplugs are not to be used between 8.15am and 3.20pm, unless permission is given by a teacher for classroom learning.*

In addition:

- no alcohol is permitted;
- no drugs are permitted;
- no illegal substance including any smoking or vaping/huffing device and paraphernalia;
- foul or abusive language is unacceptable;
- theft is unacceptable;
- intimidation and bullying are unacceptable;
- disruptive and anti-social behaviour is unacceptable.

In line with our school values, it is also expected that all International students will:

- Follow and not break the laws of New Zealand
- Follow the school rules, boarding house and homestay rules (where applicable)
- Not own or drive a car/ motorbike/ moped and any other motorised vehicle

We aim to educate your child to be the best that they can be. We will take the time to learn about your son/daughter and to connect with him/her.

SPORTS' DEVELOPMENT / ACADEMIES

Junior Sports' Development Programme Year 7 & 8

Our Junior Sports' Development Programme will be offered as a lunchtime opportunity, which will run at separate lunchtimes for Year 7 and Year 8. These are offered in Netball Terms 1-3, Cricket Terms 1 & 4, Football Terms 1-3, Rugby Terms 1-3 and Touch Rugby Term 4. Four experienced coaches will take each sports code. The purpose is to help transition our Year 7 and 8 students into the academies and school sport at Year 9. There would be an opportunity for students to opt into these on a term-by-term basis, however, if playing a code during a season, it is best to stay with that sporting code and experience the same standards set in our academy programme of attendance and skills development. Further information, including sign-up details will be given to students and their families at the start of 2021 school year.

Junior Sports' Academies Year 9 & 10

Our Junior Sports Academies are offered as an elective, which will run as a subject class for four periods over our seven-day timetable. These academies are offered in Netball, Cricket, Football, Hockey and Rugby, with four experienced and nationally recognised coaches. The purpose of these academies is to improve the focus of the individual student by putting them in a more specialized programme. The expectations are clear and standards are not compromised. A culture of excellence will grow from this, where students will be given the opportunity to reach their potential and develop into high performance athletes. Option selections should have been made for 2021 and therefore timetabled. All further information will be given in the new year.

STATIONERY

The International Office will help all international students order their stationery for their subjects once they are at school.

ST PETER'S ALUMNI ASSOCIATION

The \$250 imprest deposit, paid on entry to the school, will be converted into a life membership fee of the St Peter's Alumni Association, when your child leaves St Peter's.

The Alumni Association aims to promote and keep alive, among past students, a continual and active interest in St Peter's.

The Association provides opportunities for past students to keep in touch with each other and the school, organising social events both at St Peter's and in various cities, both in New Zealand and overseas.

ST PETER'S LEAVE WEEKENDS

St Peter's leave weekends are those on which we have no regular classes or school activities, giving our students and families a longer weekend. These are compulsory 'leave' weekends for boarders.

The International Accommodation Co-Ordinator will arrange police vetted homestay families for our international students over these times.

STUDENT CENTRE


Open from 8.00am-5.00pm Monday to Thursday, 8.00am-3.40pm on Fridays, during term time.

Student Services include student car parking, timetables, issuing and receiving forms, casual day tickets for St Peter's bus services, absences, lateness and student ID cards.

UNIFORM

The International Student Office will arrange an appointment for each international student to purchase their school uniform. All school uniform is able to be purchased at the school Owllet Shop.

There is a summer and winter uniform for both Prep School (Year 7-8) and Secondary School (Year 9-13) students. Formal uniform is required during formal school occasions, such as performances, debates, Boarders' and special Chapel services.

 A symbol on the calendar means students wear Formal uniform. Year 13 students have their own uniform, which differs from the Year 9-12 uniform.

The St Peter's uniform is to be worn with pride, both on and off campus. It must be clean, tidy and in good condition.

- School uniform must be worn at all times during the school day.
- Formal uniform is required during Friday town leave for boarders in Terms 2 and 3. Day uniform is worn during Terms 1 and 4.
- No jewellery is to be worn, apart from a watch, and for girls only, a plain pair of small silver or gold studs/sleepers (no pearl or coloured earrings) in the lower ear lobe.
- Makeup / nail varnish is not permitted. Nails to be natural and clear.
- Hair must be tidy and off the collar and face, tied up if shoulder length or longer.
- Hair should not be dyed or worn in a style which brings undue attention, including undercuts and extreme shaving and no shaved part lines;
- Only designated shoes are permitted. Sandals are to be worn correctly, with the heel straps up and done up.
- All items of clothing must be clearly named.
- Black, brown, navy or red hair ties, no scrunchies.

Uniform prices (a guide only)

| Boys | Boarding | Day |
|------------|-----------|-----------|
| Years 7-8 | \$1192.00 | \$1636.00 |
| Years 9-12 | \$2188.00 | \$1734.00 |
| Year 13 | \$1820.00 | \$1550.00 |

| Girls | Boarding | Day |
|------------|-----------|-----------|
| Years 7-12 | \$1867.00 | \$1562.00 |
| Year 13 | \$2090.00 | \$1803.00 |

UNIFORM GIRLS' - Years 7 - 12

Year 7-8 Formal Uniform

- Prep blazer
- White striped shirt (tucked in)
- School regulation skirt to knee length
- School tie
- School regulation skin-tone tights (optional in Term 1 - no socks)
- Flat black lace up or school slip-on shoes
- Black, brown, navy or red hair ties
- Black or brown clips, headband (optional)



Year 9-12 Formal Uniform

- School navy blazer
- White striped shirt (tucked in)
- School regulation skirt to knee length
- School tie
- School regulation skin-tone tights (optional in Term 1 - no socks)
- Flat black lace up or school slip-on shoes
- Black, brown, navy or red hair ties
- Black or brown clips, headband (optional)



Year 7-12 Winter Uniform

- Blazer (optional)
- White striped shirt (tucked in with skirt)
- School tie
- School regulation skirt to knee length
- School jersey
- School black tights
- Flat black lace up or school slip on shoes
- Rain jacket (thick/thin)
Thick jacket compulsory for boarders
- Black, brown, navy or red hair ties
- Black or brown clips, headband (optional)
- Trousers (hemmed), school black belt, white ankle socks (Trousers are an optional uniform item)



Year 7-12 Summer Uniform

- White striped shirt
- School striped shorts
- Red school sandals
- Black, brown, navy or red hair ties
- Black or brown clips, headband (optional)



UNIFORM BOYS' - Years 7 - 12

Year 7-8 Formal Uniform

- Prep blazer
- White striped shirt (tucked in)
- Grey shorts
- School tie
- School black belt
- Prep regulation socks
- Black leather lace-up shoes
- Garters



Year 7-8 Winter Uniform

- Blazer (optional)
- School jersey
- White striped shirt (tucked in)
- Grey shorts
- School tie
- School black belt
- Prep regulation socks
- Black leather lace-up shoes
- Rain jacket (thick/thin) - thick jacket is compulsory for boarders
- Garters



Year 7-12 Summer Uniform

- White striped shirt (tucked in)
- Grey shorts
- School black belt
- Black school sandals (not Birkenstocks)



Year 9-12 Formal Uniform

- School navy blazer
- White striped shirt (tucked in)
- Grey shorts
- School tie
- School black belt
- Short black or grey socks
- Black leather lace-up or slip-on shoes



Year 9-12 Winter Uniform

- Blazer (optional)
- School jersey
- White striped shirt (tucked in)
- Grey trousers
- School tie
- School black belt
- Plain black or grey socks
- Plain black leather lace-up school shoes
- Garters
- Rain jacket (thick/thin) Thick jacket is compulsory for boarders
- Gumboots for boarders from Riddett, Oliphant, Broadhurst in Terms 2 & 3 with Winter uniform only (not with Formal uniform)



UNIFORM YEAR 13

Formal Uniform - Girls

- School navy blazer
- Navy striped shirt (tucked in)
- School regulation skirt
- School tie
- School regulation skin-tone tights (optional in Term 1 - no socks)
- Flat black leather lace-up or school slip-on shoes
- Black, brown or navy hair ties
- Black or brown clips, headband (optional)



Formal Uniform - Boys

- School navy blazer
- Navy striped shirt (tucked in)
- Grey trousers
- School tie
- School black belt
- Short grey or black plain socks
- Black lace-up or slip-on school shoes



Winter Uniform - Girls

- Blazer (optional)
- Navy striped shirt (tucked in)
- School tie
- School regulation skirt
- Red Year 13 jersey
- School black tights
- Flat black lace-up or school slip-on shoes
- Rain jacket (thick/thin)-thick jacket compulsory for boarders
- Black, brown, navy or red hair ties
- Black, brown clips, headband (optional)
- Trousers (hemmed), school black belt, white ankle socks (Trousers are an optional uniform item)



Winter Uniform - Boys

- Blazer (optional)
- Red Year 13 jersey
- Navy striped shirt (tucked in)
- Grey trousers
- School tie
- School black belt
- Short grey socks
- Black lace-up or slip-on shoes
- Rain jacket (thick/thin)-thick jacket is compulsory for boarders



Summer Uniform - Girls/Boys

- Navy striped blouse/shirt
- Navy shorts
- Red school sandals (Girls)
- Black sandals (Boys)
- School black belt (Boys)
- Black, brown, navy or red hair tie
- Black, brown clips, headband (optional)



PE Uniform

Year 7-13 (all students)

- PE Shirt (new style) Collarless, short or long sleeve (long sleeve worn T2 and T3 only)
- PE shorts
- Tracksuit top
- Tracksuit bottoms
- White socks

Pool (all students)

- PE shorts
- Navy or Black one piece swimming togs
- School Rash top (optional)



WELLBEING

St Peter's 'Wellbeing Service Structure' provides wraparound care for our students. The Deans and House Directors will also work closely with staff within this service and provide collaborative support.

Pastoral Care Framework

Our Deans pride themselves on the care they extend to our students. Nurturing our students, helping them to learn key capabilities and life skills is essential to their wellbeing.

Your child will be in a House – Hanna, Thornton, Chandler, or Swears and will have a Dean responsible for the year. Each Dean oversees both the pastoral and academic needs of each student. When your child begins at school the Dean will ensure a 'student buddy' is appointed to help your child settle in.

For students in Years 9–13, their House Dean is the **first point of contact, for you as a parent**, regarding school pastoral and academic needs.

Chandler

Year 13 Lead Dean

Mark Bellham

mark.bellham@stpeters.school.nz

Year 11 and 12 House Dean

David Vesseur

davidv@stpeters.school.nz

Year 9 and 10 House Dean

Helen Arjomandi

helena@stpeters.school.nz



Thornton

Year 13 Lead Dean

Marty Seifert

martys@stpeters.school.nz

Year 11 and 12 House Dean

Chris Macleod

christinem@stpeters.school.nz

Year 9 and 10 House Dean

Alex Green

alexg@stpeters.school.nz



Hanna

Year 13 Lead Dean

Leanne Walker

leannew@stpeters.school.nz

Year 11 and 12 House Dean

Hanna Reid

hanna.reid@stpeters.school.nz

Year 9 and 10 House Dean

Oliver Fox

oliverf@stpeters.school.nz



Swears

Year 13 Lead Dean

Jenny O'Leary

jennyl@stpeters.school.nz

Year 11 and 12 House Dean

Jodie Blackwell

jodieb@stpeters.school.nz

Year 9 and 10 House Dean

Natasha Frethey

natasha.frethey@stpeters.school.nz



Year 7 Dean

Mario Saez

mario.saez@stpeters.school.nz

Year 8 Dean

Owen Steverson

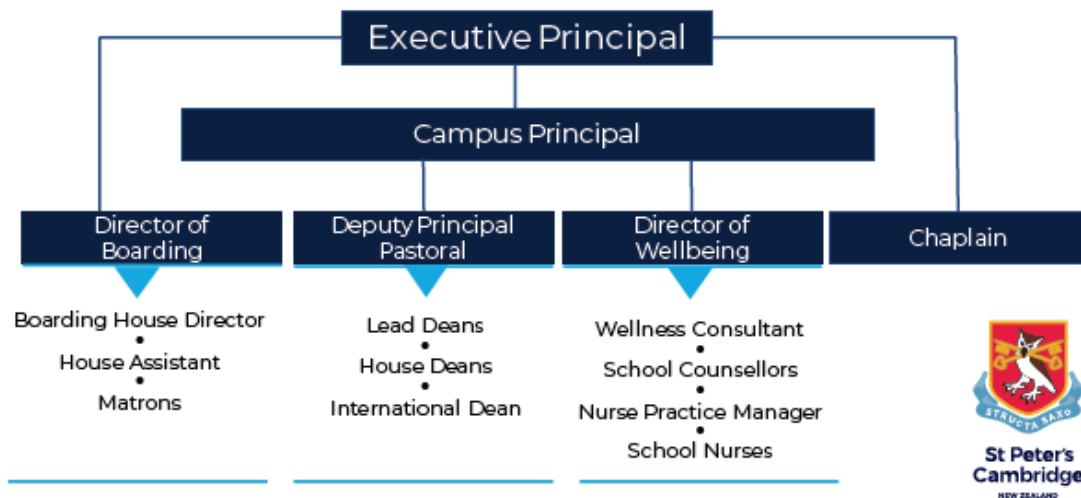
owens@stpeters.school.nz

International Dean

Lauree Fuller

lauree.fuller@stpeters.school.nz

Wellbeing Services Structure



We also offer;

- International Student Support Services;
- Learning Groups and Learning Group Coaches;
- Prefects;
- School Chaplain;
- Senior Leadership Team;
- Student Centre Staff;
- Student Futures Consultants;
- Teachers;
- Wellbeing Staff.

YEAR 7 AND 8

The Year 7 and 8 learning programme provides our students with an engaging and nurturing environment in which to learn, develop and be challenged across a range of learning areas, including academic, cultural, sporting and social contexts.

Our Year 7 and 8 students are affectionately known as 'Preppies'. The term, along with other traditions such as Flag Day and Star Cards, help to connect today's Year 7 and 8's to the rich history of our past students and St Peter's School in general. The term 'Preppies,' also reminds us that, Arthur Broadhurst, founded St Peter's as a Prep School, back in 1936.

Ten classes operate, with five in Year 7 and five classes in Year 8. The New Zealand Curriculum is facilitated by a combination of homeroom and specialist teachers. Each Year 7 or Year 8 student has a homeroom teacher, who also facilitates learning in the subjects of English, Mathematics and Social Studies.

Students move to specialist teachers for the subjects of Science, Physical Education (PE), Performing Arts (PFA), Technology, Visual Arts and Languages. As part of supporting students, the homeroom teacher also regularly teaches the wellbeing curriculum. Our focus is on personal wellness and developing positive, healthy relationships. Your child's homeroom teacher is your first point of contact for any queries you have regarding academic or pastoral matters.

Each Year level also has an assigned Dean to oversee the day-to-day academic and pastoral care programmes. The Deans provide another layer of support and guidance, to enable your child's needs to be met effectively. Communication from the Year 7 and 8 staff ensures you can follow your child's learning journey throughout the year.

In addition to formal reports and interviews, the staff also send home a weekly publication called *The Week Ahead*.

The Week Ahead will be sent to Parents each Friday. This provides information pertaining to Year 7 and 8 for the next week.

The Valentine Room, in the Junior Block, provides the hub for Year 7 and 8 students during break times, along with the playground and open areas outside the block. In good weather students, are encouraged to get outside and play. Students need to wear their school hat during Term 1 and 4. Students in Year 7 and 8 are not allowed to be on devices at break and lunch time.

Learning in contexts, other than a classroom, helps students grow their capabilities of resilience, perseverance and hard work. The Year 7 and 8 students each attend separate year level camps over the year. The dates are outlined on the School Calendar and additional information will be communicated to parents well ahead of the group.

Your child's homeroom teacher is your first point of contact for any queries you have regarding academic or pastoral matters.



St Peter's Cambridge

NEW ZEALAND

The school crest was chosen by Broadhurst and Beaufort. Beaufort, a clergyman, suggested the idea of the St Peter's key to heaven and hell. Broadhurst came up with the suggestion of an owl, symbolic of Minerva the Goddess of Wisdom. It seemed quite logical for the owl to hold the keys in its beak and this image would be emblazoned on a red shield. St Matthew's Gospel is the inspiration for the school's motto, Structa Saxo, meaning 'Founded on a Rock'. 'Thou art Peter, and upon this rock I will build my church; and the gates of hell shall not prevail against it.'

PRIVATE BAG 884

CAMBRIDGE 3450

T: +64 7 827 9899

F: +64 7 827 9812

www.stpeters.school.nz